

4. Concerto in F Minor for Violin, Strings, and Continuo

(A)

Allegro non molto

5

6
4
2

7
5

6
4

7
b7

9

b6
b4

7
5

b5
4

b7

14

21

6
b4

b6
5

f

25

29

7 6 7 6 7
b7

33

7
b7

7
b7

6
5

b7

39

5
4
2

6
5

b7

7
b7

43

b7

7
b7

(B)

(C)

(D)

8

56

f

60

62

Largo

Sempre piano

9

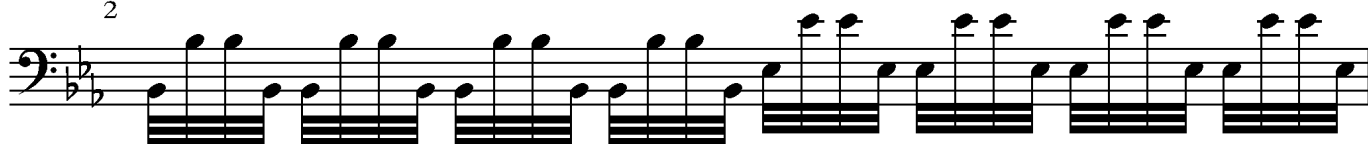
16

Largo



Sempre molto forte

2



3



4



5



6



7



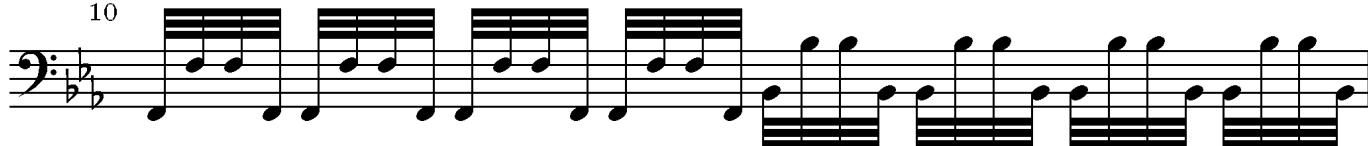
8



9



10



Violoncello - 1

11

12

13

14

15

16

17

(F)

Allegro



Arcate lunghe, e tasto solo

15



Tasto solo

29



43



Tasto solo

62



Tasto solo

76



①

89



96



Lento
101



120
Allegro



124



132



140

5
4

147

5
4

Detailed description: This block contains two staves of musical notation in bass clef with a key signature of two flats (B-flat and E-flat). The first staff, starting at measure 140, contains measures 140 through 146. It features a complex rhythmic pattern with many beamed eighth and sixteenth notes. A '5/4' time signature change is indicated below the staff at measure 144. The second staff, starting at measure 147, contains measures 147 through 153. It begins with a whole rest in measure 147, followed by the same complex rhythmic pattern. Another '5/4' time signature change is indicated below the staff at measure 151. The piece concludes with a final note in measure 153, followed by a double bar line.